



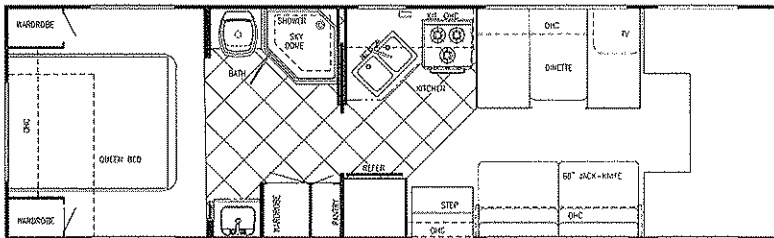
FLOORPLANS

Cavalier 2002

• RENTAL • CLASS C MOTORHOMES •

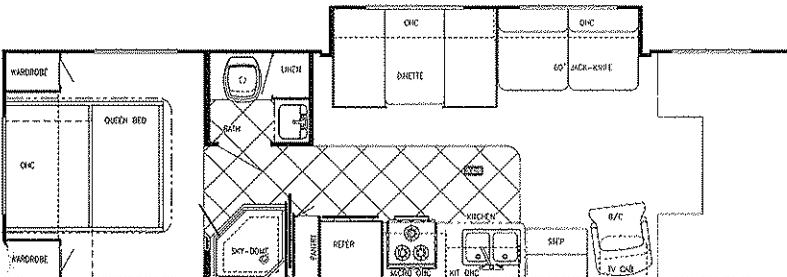


• FLOORPLANS •



Chassis	Ford V-10
Fuel	55 gal
GVWR	14,050
Length	30'-8"
Height	11'-3"
Width	101"
Black	36 gal
Grey	36 gal
Fresh	34 gal
LP Gas Tank	48 lbs.
Furnace	25,000 BTUs
Water Heater	6 gal

Model W6301C (Sofa or Barrel Chairs Opt., Twin Beds or Bunks Opt.)



Chassis	Ford V-10
Fuel	55 gal
GVWR	14,050
Length	31'-7"
Height	11'-3"
Width	101"
Black	36 gal
Grey	36 gal
Fresh	34 gal
LP Gas Tank	48 lbs.
Furnace	25,000 BTUs
Water Heater	6 gal

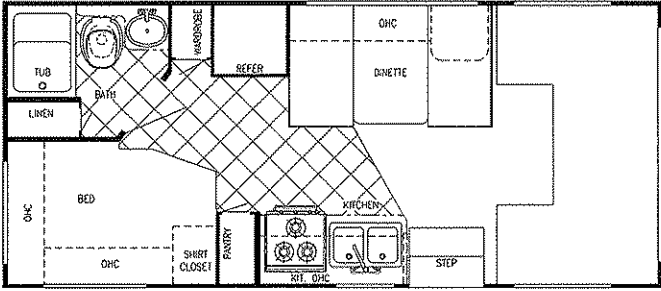
Model W6316C (Twin Beds Opt.)



FLOORPLANS

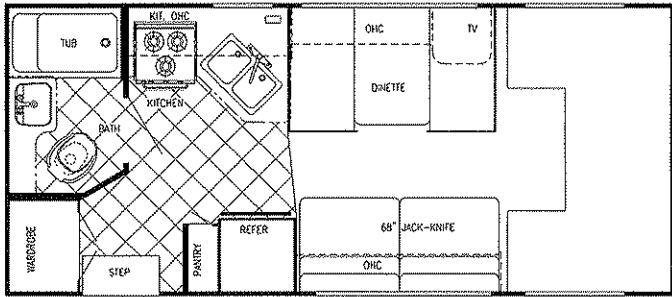
Cavalier 2002

• FLOORPLANS •



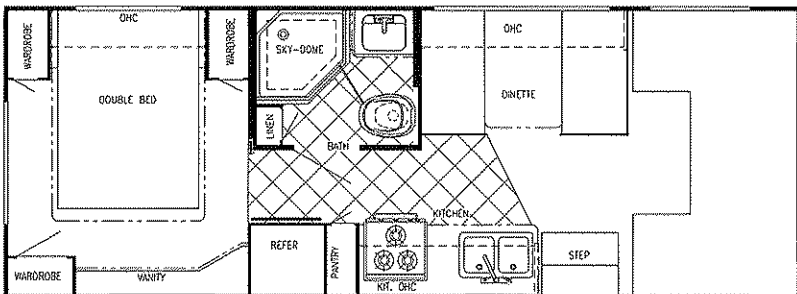
Chassis	Ford V-10
Fuel	37 gal
GVWR	10,700
Length	22'-4"
Height	11'-1"
Width	101"
Black	30 gal
Grey	30 gal
Fresh	32 gal
LP Gas Tank	48 lbs.
Furnace	25,000 BTUs
Water Heater	6 gal

Model W6210C (Sofa Opt.)



Chassis	Ford V-10
Fuel	37 gal
GVWR	10,700
Length	22'-4"
Height	11'-1"
Width	101"
Black	30 gal
Grey	30 gal
Fresh	22 gal
LP Gas Tank	48 lbs.
Furnace	25,000 BTUs
Water Heater	6 gal

Model W6211C (Sofa Opt.)



Chassis	Ford V-10
Fuel	55 gal
GVWR	11,500
Length	25'-11"
Height	11'-1"
Width	101"
Black	36 gal
Grey	36 gal
Fresh	34 gal
LP Gas Tank	48 lbs.
Furnace	25,000 BTUs
Water Heater	6 gal

Model W6253C (Sofa Opt.)

Cavalier 2002



STANDARD SPECIFICATIONS

Interior & Decor

- 6'-8" Interior Height
- Stile Constructed Cabinetry
- Privacy Curtain Cab
- Deluxe Carpet w/Pad Throughout
- Generous Overhead Storage
- 2-Way Driver & Passenger Seat
- Coordinated Bedspreads & Shams (Opt. all models)
- Decorator Curtains & Shades w/Valances
- Queen Size Bed, Cab-Over
- Power Vent in Commode

Electrical Systems

- Easy Store 30' Elect. Power Cord
- Overhead Reading Lights
- 110-Volt Receptacles
- Ground Fault Circuit Interrupter
- Outside Receptacle
- TV Antenna w/Amp & Boost
- Auxiliary Battery
- Electronic Converter w/Charger (45 Amp)
- Generator Prep

Bath & Water

- Demand Water System
- City Water Hook-Up

- Tub/Shower Combo
- Lavatory w/Base Cabinet Storage
- Water Bypass Valve

Exterior & Construction

- Smooth Fiberglass Exterior
- Rear Ladder (Opt.)
- Chrome Bumper Cover
- Deluxe Awning (Opt.)
- Welded Aluminum Cage Const.
- 4-Ply Lam. Walls, Roof & Floor
- Laminated Rubber Roof w/Heliarc-Welded Aluminum Rafters
- Tubular Steel Floor
- Laminated Floor w/ Metal Underbelly
- Foamed, Sealed & Undercoated
- Generous Above-Floor Ext. Storage
- Generous Ext. Basement Storage
- Distinctive Exterior Graphics
- Expansive Radius Windows
- Hose Storage Bumper
- Self Storing Entry Step
- Front Cab-Over Window (Opt.)
- Outside Grab Handle
- Porch Light
- Dead Bolt on Entry door
- Spare Tire and Carrier
- Mag-Look Wheel Covers

Appliances

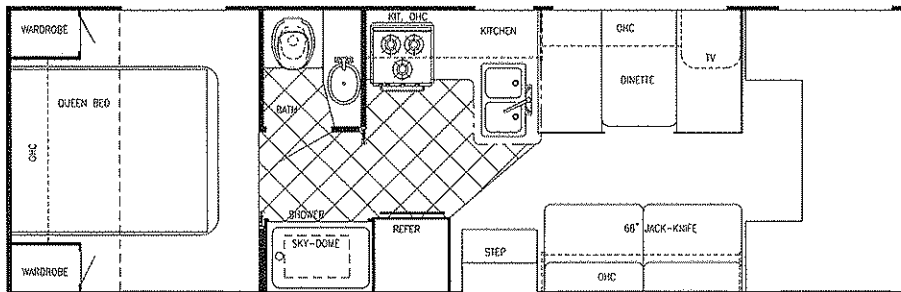
- 3-Burner Range Top
- Power Range Hood
- Large 2-Way Refrigerator
- Microwave (Opt.)
- 13,500 BTU Roof Air
- LP Leak Detector
- Carbon Monoxide Detector
- Monitor Panel

Popular Options

- Chevy 8.1 Ltr.s (6210, 6211, 6253, 6280)
- LP Gas Oven
- Battery Disconnect
- Tub Surround
- Emergency Start Switch
- Aluminum Running Boards

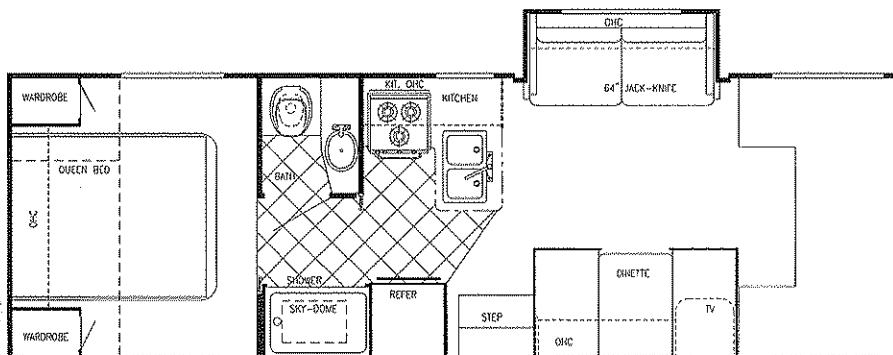
Ford Chassis

- 4 Speed Automatic Overdrive Transmission
- Tilt Wheel Steering
- CD Player-AM/FM Stereo w/4 Speakers
- Power Brakes & Steering
- Radial Tires
- Cruise Control



Chassis	Ford V-10
Fuel	55 gal
GVWR	14,050
Length	29'-3"
Height	11'-1"
Width	101"
Black	36 gal
Grey	36 gal
Fresh	34 gal
LP Gas Tank	48 lbs.
Furnace	25,000 BTUs
Water Heater	6 gal

Model W6280C (Sofa Opt. Barrel Chairs Opt. Twin Beds or Bunks Opt.)



Chassis	Ford V-10
Fuel	55 gal
GVWR	14,050
Length	29'-3"
Height	11'-1"
Width	101"
Black	36 gal
Grey	36 gal
Fresh	34 gal
LP Gas Tank	48 lbs.
Furnace	25,000 BTUs
Water Heater	6 gal

Model W6281C (Sofa or Barrel Chairs Opt. Twin Beds or Bunks Opt.)

STRENGTH

Cavalier 2002

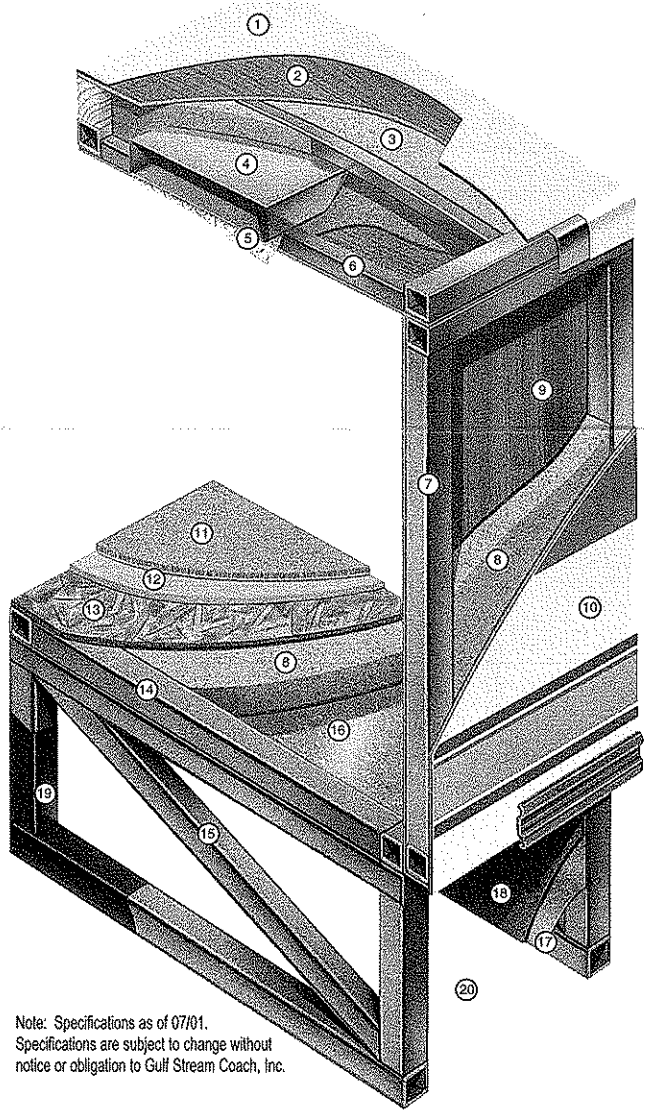


• CRADLE OF STRENGTH •

Take the Time to Compare

Motorhomes Built To Last

1. Seamless Rubber Roof For Greater Energy Efficiency and Dependability.
2. Luan Decking for Additional Strength.
3. Molded, High Density EPS (Expanded PolyStyrene) Roof Brick Insulation - Provides Consistent Insulative Value As Well As Superior Dimensional Rigidity.
4. One-Piece Formed Aluminum Air Conditioning Duct, Completely Surrounded By EPS Insulation.
5. Bubble-Wrapped Foil Insulation Provides Superior Insulation and Helps Prevent Condensation.
6. Rugged Welded Tubular Aluminum Roof Framing.
7. Rugged Heavy-Gauge Tubular Aluminum, Fixture Welded to Form the Sidewall Framing.
8. High-Density EPS Insulation Provides Superior Laminating and Bonding Characteristics and Insures Greater Energy Efficiency.
9. Interior Wall Panels Securely Laminated to Sidewall Framing.
10. "Mende" Fiberglass Exterior Vacuum-bond Laminated to Sidewall Framing for Lasting Beauty and Durability. (Super Slick - Classic)
11. High-Quality Stain-Resistant Carpeting Available in Designer Coordinated Colors.



Note: Specifications as of 07/01.
Specifications are subject to change without notice or obligation to Gulf Stream Coach, Inc.

12. Extra-Thick Padding Under Carpet Provides Extra Comfort and Increases Carpet Durability.
13. Seamless Structurewood Floor Decking Laminated to Steel Floor Structure Assures a Quiet, Long-Lasting, Rigid Floor and comes with a 10-Year Warranty.
14. Heavy-Gauge Tubular Steel Framing, Fixture Welded for Extra Strength and Stability.
15. Heavy-Gauge Tubular Steel Framed, Fixture Welded Floor Truss System Provides the Strongest Class C Foundation in the Industry.
16. Seamless Layer of Galvanized Steel Securely Laminated to the Steel Floor Framing.
17. Galvanized Steel Used to Form Each Storage & Holding Compartment.
18. Durable All-Weather Carpeting Completes Each Accessible Storage Compartment, Providing Extra Protection for Luggage and Valuables.
19. Rust-Prohibitive Paint Coating Applied to All Steel Framing Assures Corrosion and Rust Protection.
20. The Industry's Strongest, Most Spacious Exterior Storage Compartments.



Post Office Box 1005 NAPPANEE, IN 46550
• YOUR DEALER •



VISIT
www.gulfstreamrv.com

FOR MORE DETAILED INFORMATION...
OR CALL 1-800-765-8787 EXT. 3288

*All weights and measures are approximate and subject to change without notice. For more information, contact your local dealer, www.gulfstreamRV.com or Gulf Stream Coach, Inc. Gulf Stream Coach, Inc. reserves the right to make changes in prices, colors, materials, components and specifications and to discontinue models at any time without notice or obligation. Gulf Stream Coach, Inc. assumes no responsibility for any error in type or print reproduction of specifications or floorplans in this brochure. Photographs may show equipment or items that are optional and are not included in the purchase price of each coach, fifth wheel or trailer. © Copyright 2001 Gulf Stream Coach, Inc. Nappanee, Indiana USA